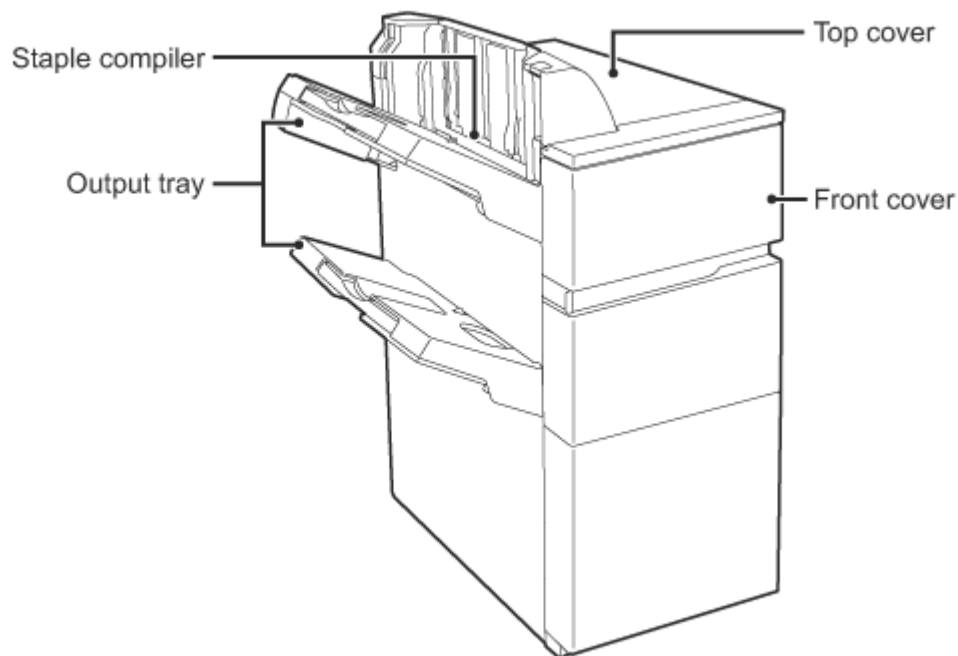


## Overview

This includes the offset function that outputs sorted paper while staggering each set of paper and the **staple** sort function that **staples** each set of prints. Installing an optional hole punch module allows you to punch holes in printed paper.

## Function names

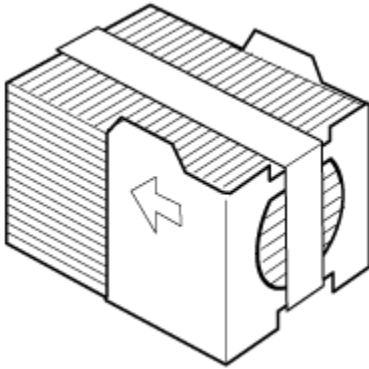
Tap the name to make its details pop up.



- Do not place heavy objects on the finisher or press down on the finisher (50-sheet stapling).
- Exercise caution when you turn on the power and when printing is taking place, as the tray may move up and down.
- A finisher (50-sheet stapling) cannot be installed simultaneously with a saddle finisher.

## Supplies

The finisher (50-sheet stapling) requires the following **staple** cartridge:  
**Staple** cartridge (approx. 5000 **staples** per cartridge × three cartridges) AR-SC2



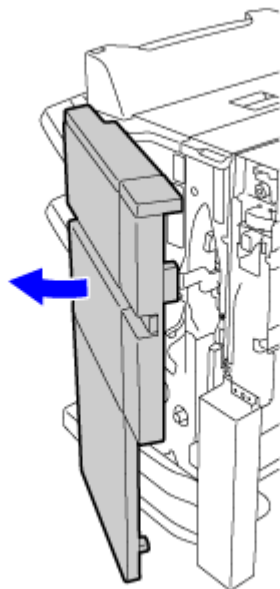
## Replacing the cartridge

When the **staple** cartridge runs out of **staples**, a message will appear in the operation panel. Follow the operation procedure to replace the **staple** cartridge.

1.



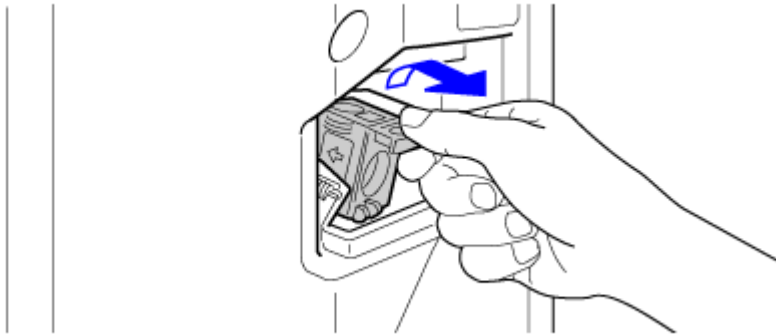
**Open the front cover**



2.



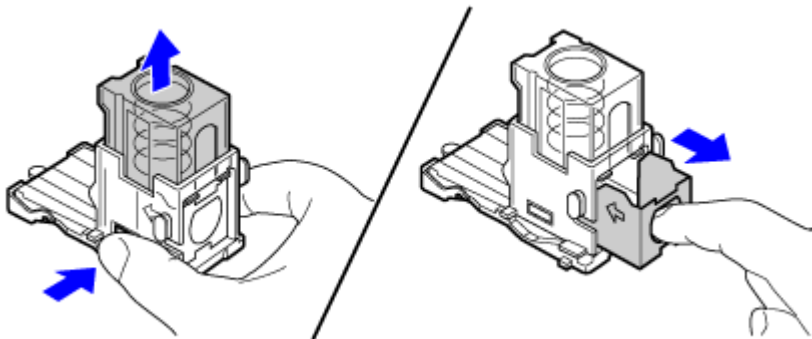
Squeeze the green parts of the **staple** case and pull the case up and then out



3.

**Remove the empty **staple** cartridge**

Press the lock button to release the **staple** case cover and then remove the **staple** cartridge.

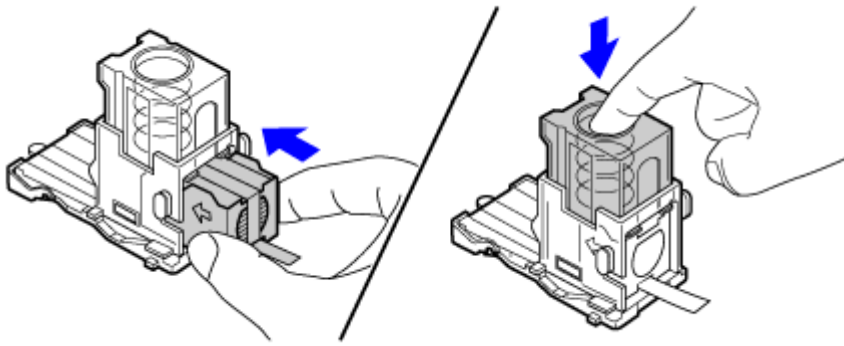



When **staples** remain, the **staple** cartridge cannot be removed.

4.

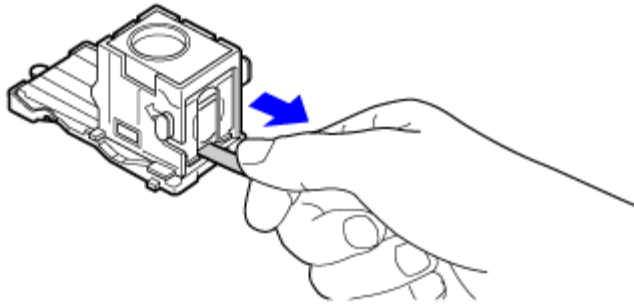
**Insert a new **staple** cartridge into the **staple** case**


Push the **staple** cartridge in until it clicks into place.

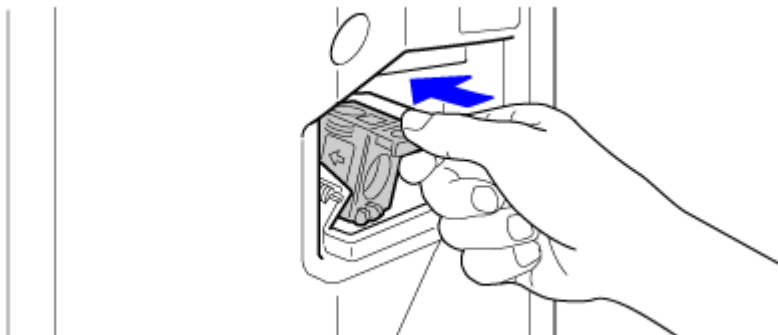


 Do not remove the seal from the cartridge before inserting the cartridge into the case.

5.  Pull the seal that holds the **staples** straight out

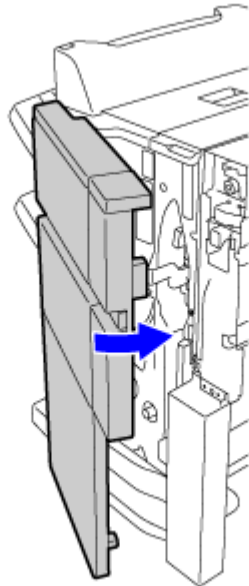


6.  Push the **staple** case firmly back in  
Push the **staple** case in until it clicks into place.



7.

**Close the front cover**



Make a proof copy in staple sort function to verify that stapling takes place correctly.