

[For Home](#)[For Work](#)[Support](#)

## HP Support

[Support Home](#)[Products](#)[Software  
& Drivers](#)[Communities](#)[Contact  
Support](#)[Product Home](#)

# Replacing the Cartridges

## Introduction

---

This document contains steps for replacing the cartridges.

To purchase cartridges or check cartridge compatibility for your printer, go to [HP Home & Home Office Store](#) (US only), and then click **Ink Toner & Paper**.

If you are located outside of the US, follow these steps to purchase cartridges using HP SureSupply.

1. Go to [HP SureSupply](#).
2. Scroll to the bottom of the page and make sure that the country/region location is correct.

Genuine HP cartridges can also be purchased from other retailers.

Which cartridges you use might depend on your country/region. Follow these steps to purchase cartridges or check cartridge compatibility for your printer using HP SureSupply.

1. Go to [HP SureSupply](#).
2. Scroll to the bottom of the page and make sure that the country/region location is correct.

### NOTE:

For the United States only, go to the [HP Home & Home Office Store](#).

Genuine HP cartridges can also be purchased from other retailers.

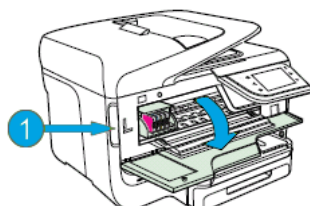
## Replacing the cartridges

---

Follow these steps to replace the cartridges.

1. Press the Power button to turn on the printer, if it is not already on.
2. Place your fingers into the slot on the left side of the printer, and then pull to open the cartridge access door. The carriage moves to the left side of the printer. Wait until the carriage is idle and silent before you proceed.

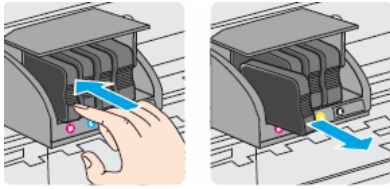
**Figure : Open the cartridge access door**



**1. Slot for opening the cartridge access door**

3. Push in on the front of the cartridge to release it, and then pull it toward you to remove it from its slot.

**Figure : Remove the cartridge from its slot**

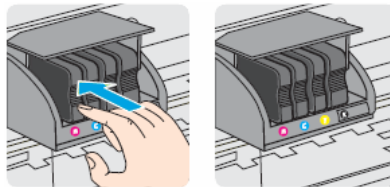


4. Remove the new cartridge from its package.
5. Hold the new cartridge so that the cartridge contacts face the printer.
6. Slide the new cartridge into its slot, and then gently push it forward until it clicks into place.

**NOTE:**

Make sure that the colored dot on the cartridge label matches the colored dot on the slot.

**Figure : Insert the cartridge into its color-coded slot**

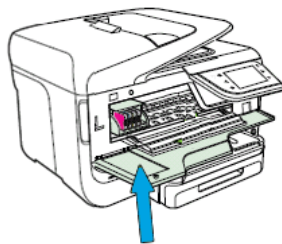


**CAUTION:**

Do not lift the latch handle on the carriage to insert cartridges. Doing so could cause the printhead or cartridges to be incorrectly seated, which could damage the print mechanism and cause printing problems.

7. Repeat these steps to install any other new cartridges.
8. Close the cartridge access door.

**Figure : Close the cartridge access door**



9. Wait until the warm-up sequence finishes and your printer is quiet before you proceed.

**Was this document helpful?**

Yes  No



### Contact HP

Let HP help you find the answer or identify a service location. [Contact us >](#)



## Have feedback about your support experience?

HP's Senior Vice President of Customer Service & Support, Richard Bailey, is interested in [hearing from you](#).

Country: **United States**

#### About HP

- Contact us
- Newsroom
- Investor relations
- Living Progress
- Accessibility
- Events
- HP Labs
- Jobs

#### Social Media

- Consumer support forum
- Enterprise business community
- Developer community
- Corporate blogs

#### HP Partners

- Become a partner
- Find a reseller
- PartnerOne

#### Customer Support

- Power cord replacement
- Download drivers
- Register your product
- HP replacement parts
- Authorized service providers
- Training & certification
- Product recycling

---

[Home](#) | [Email sign-up](#) | [Site map](#) | [Privacy](#) | [Cookies & ad choices](#) | [Terms of use](#) | [Recalls](#)

© 2015 Hewlett-Packard Development Company, L.P.

HP employees: Report website issues