



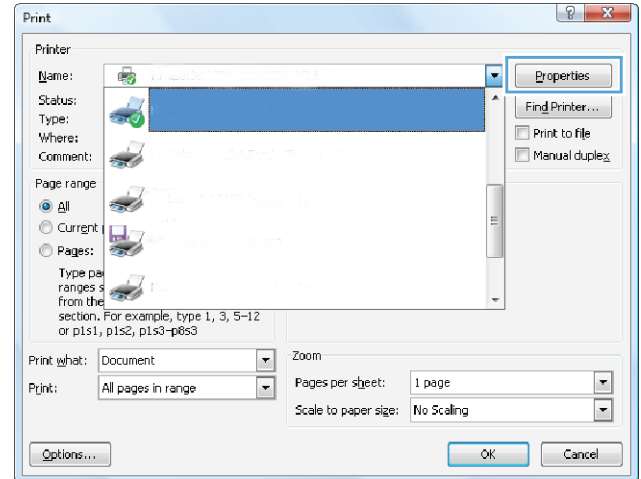
Color LaserJet Enterprise Flow MFP M880



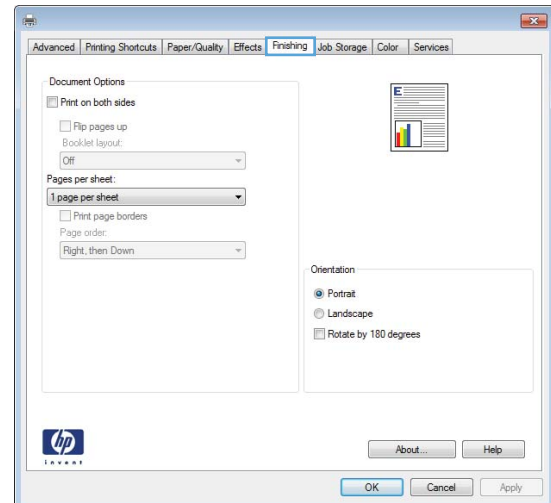
Automatically print on both sides (Windows)

NOTE: Your print driver might look different than what is shown here, but the steps are the same.

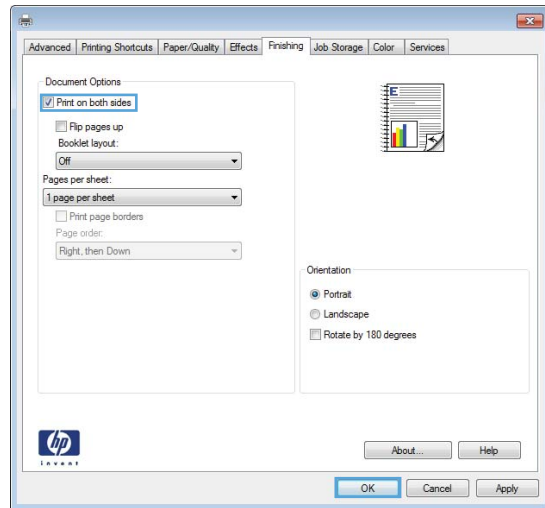
1. From the software program, select the **Print** option.
2. Select the product from the list of printers, and then select **Properties** or **Preferences** (the name varies for different software programs).



3. Click the **Finishing** tab.



4. Select the **Print on both sides** check box. Click the **OK** button to close the **Document Properties** dialog box.



5. In the **Print** dialog box, click the **OK** button to print the job.

