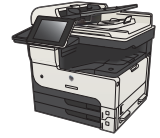


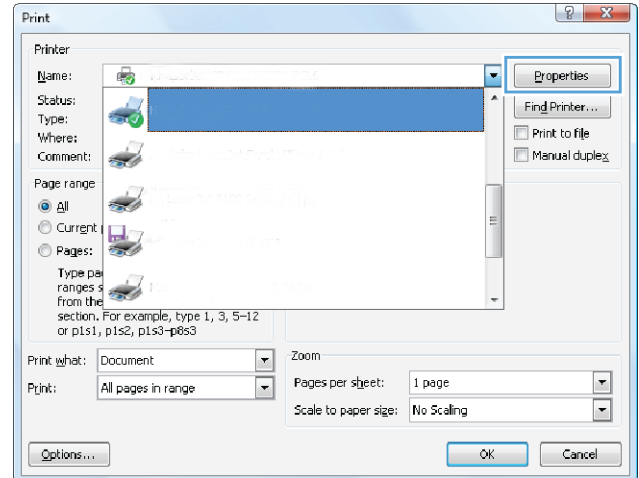


HP LaserJet Enterprise MFP M725

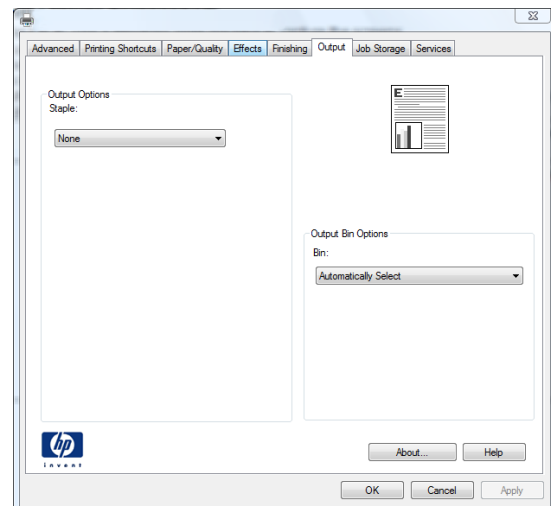


Select staple options (Windows)

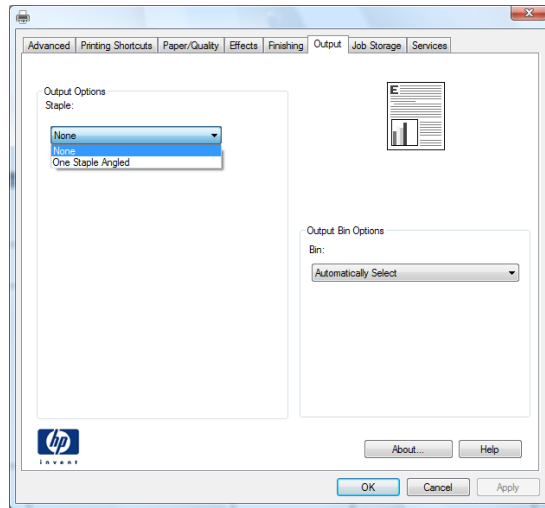
1. From the software program, select the **Print** option.
2. Select the product, and then click the **Properties** or **Preferences** button.



3. Click the **Output** tab.



- In the **Output Options** area, select an option from the **Staple** drop-down list. Click the **OK** button to close the dialog box.



- In the **Print** dialog box, click the **OK** button to print the job.

