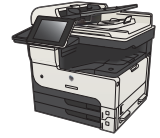


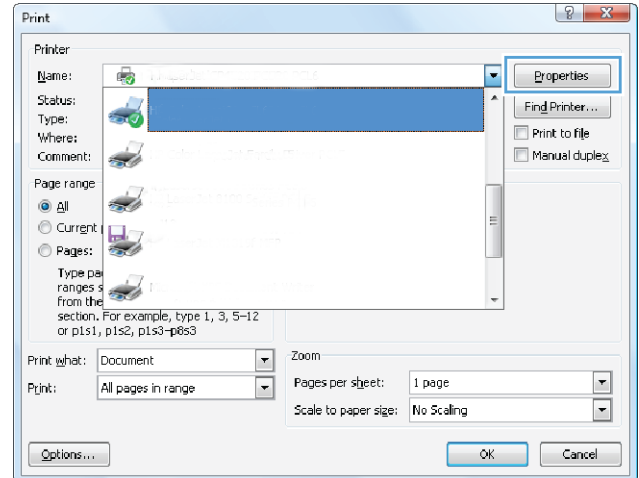


# HP LaserJet Enterprise MFP M725

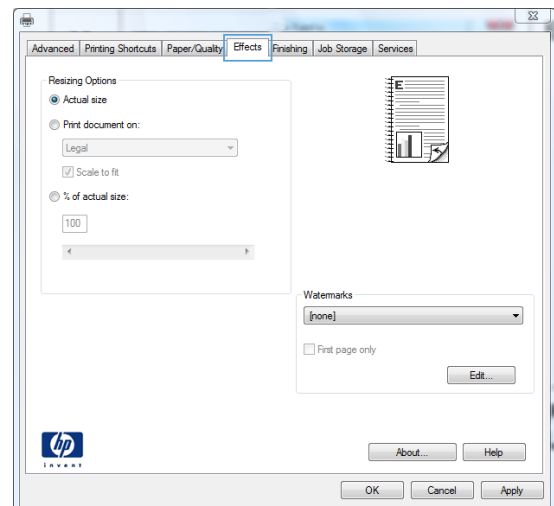


## Scale a document to fit page size (Windows)

1. From the software program, select the **Print** option.
2. Select the product, and then click the **Properties** or **Preferences** button.

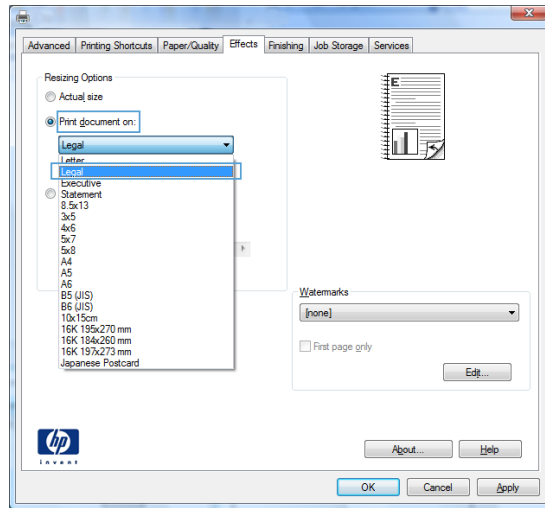


3. Click the **Effects** tab.



4. Select the **Print document on** option, and then select a size from the drop-down list.

Click the **OK** button to close the **Document Properties** dialog box.



5. In the **Print** dialog box, click the **OK** button to print the job.

