

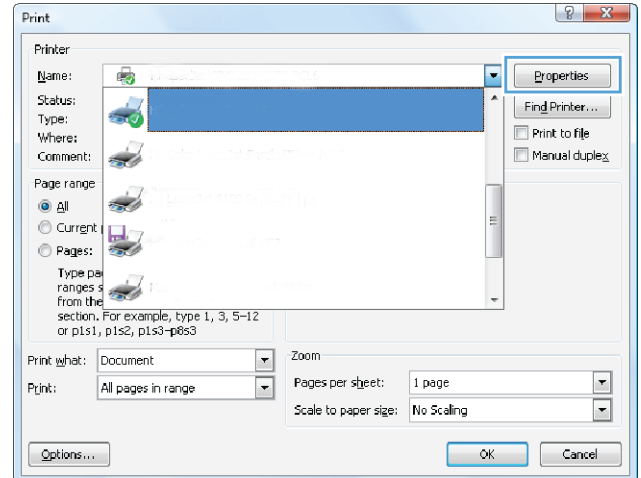


HP LaserJet Enterprise MFP M725

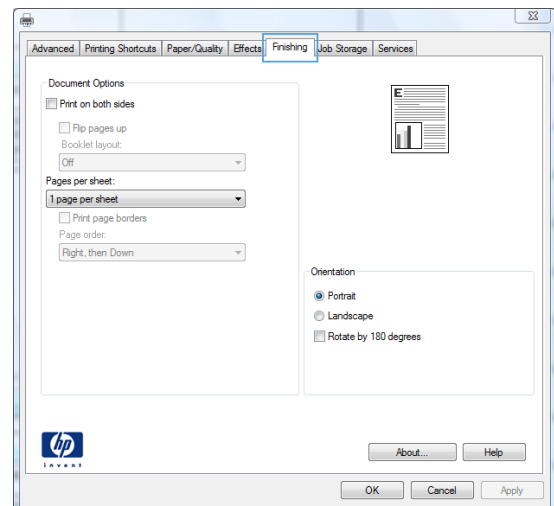


Automatically print on both sides (Windows)

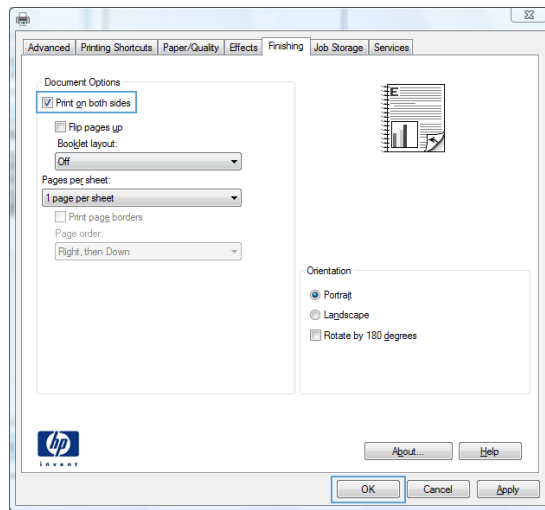
1. From the software program, select the **Print** option.
2. Select the product, and then click the **Properties** or **Preferences** button.



3. Click the **Finishing** tab.



4. Select the **Print on both sides** check box. Click the **OK** button to close the **Document Properties** dialog box.



5. In the **Print** dialog box, click the **OK** button to print the job.

