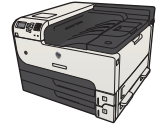


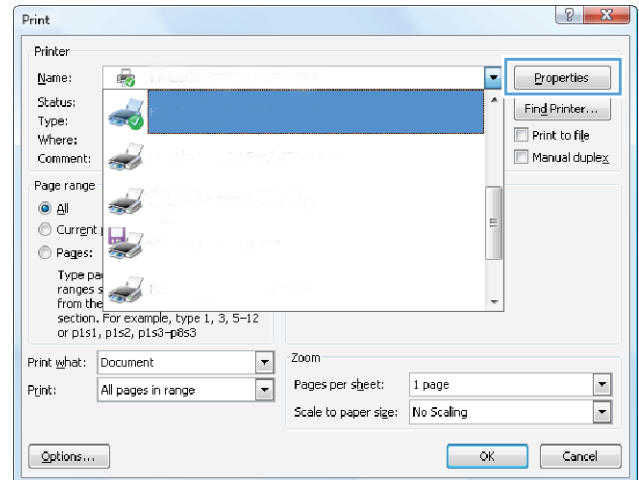


# HP LaserJet Enterprise 700 M712

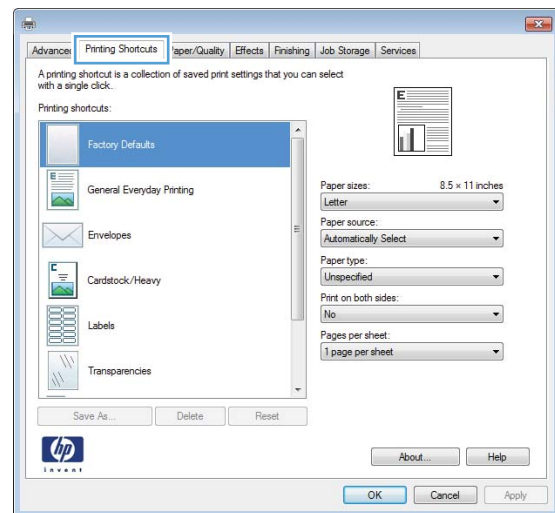


## Use a printing shortcut (Windows)

1. From the software program, select the **Print** option.
2. Select the product, and then click the **Properties** or **Preferences** button.

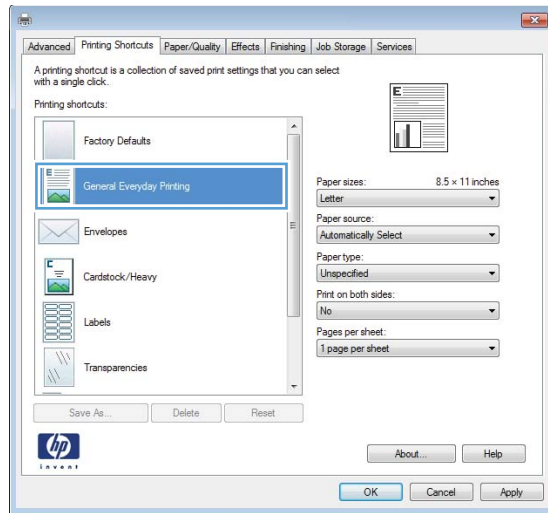


3. Click the **Printing Shortcuts** tab.



4. Select one of the shortcuts. Click the **OK** button to close the **Document Properties** dialog box.

**NOTE:** When you select a shortcut, the corresponding settings change on the other tabs in the print driver.



5. In the **Print** dialog box, click the **OK** button to print the job.

