

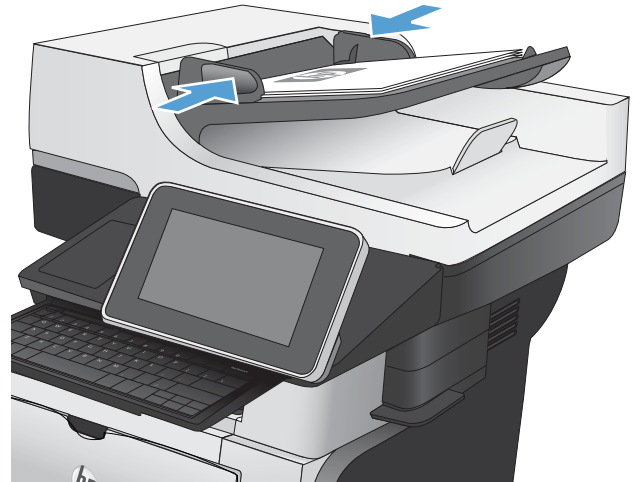


HP LaserJet Enterprise flow MFP M525

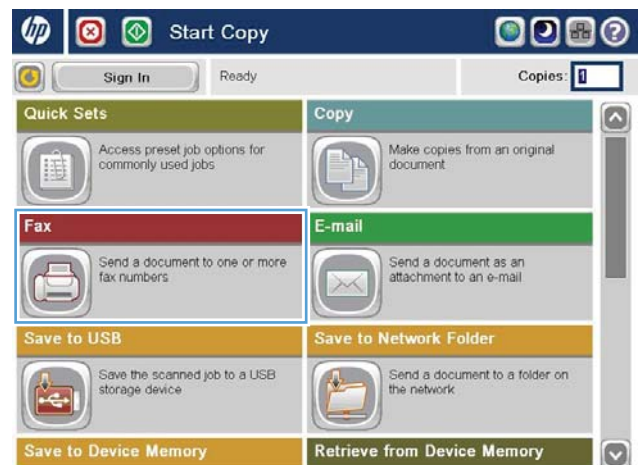


Send a fax by using a speed dial

1. Place the document face-down on the scanner glass, or place it face-up in the document feeder and adjust the paper guides to fit the size of the document.




2. From the Home screen on the product control panel, touch the **Fax** button.



3. Touch the number button for the speed dial name you want to use. The speed dial name appears in the **Fax Recipients** section of the **Fax** screen.



4. Touch the Start  button to send the fax.

NOTE: You can preview the image at any time by touching the **Preview** button in the upper-right corner of the screen. For more information about this feature, touch the **Help**  button on the preview screen.

