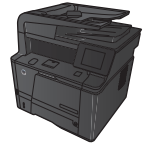


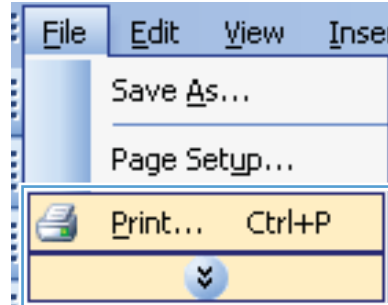


LASERJET PRO 400 MFP M425 SERIES

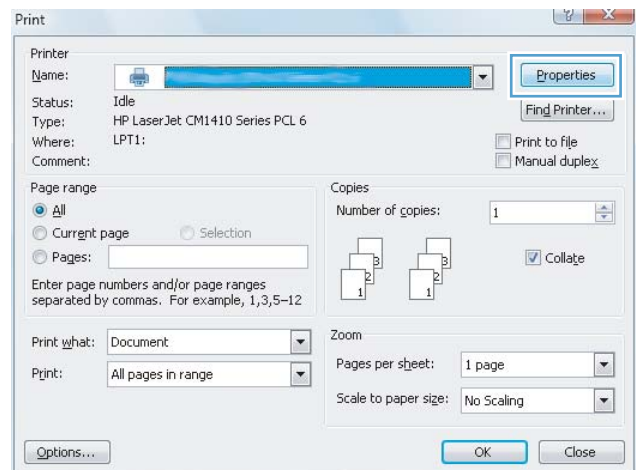


Print multiple pages per sheet with Windows

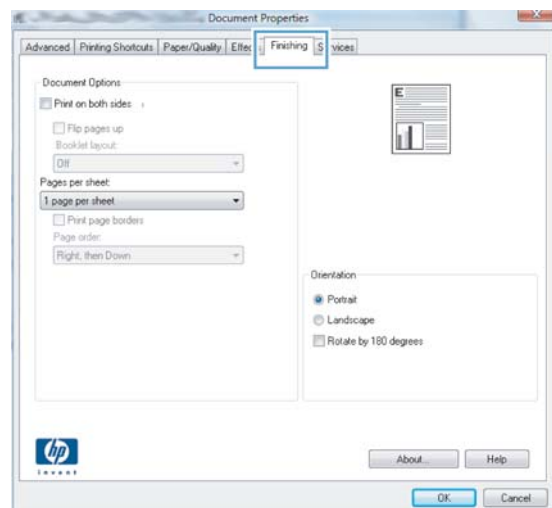
1. On the **File** menu in the software program, click **Print**.



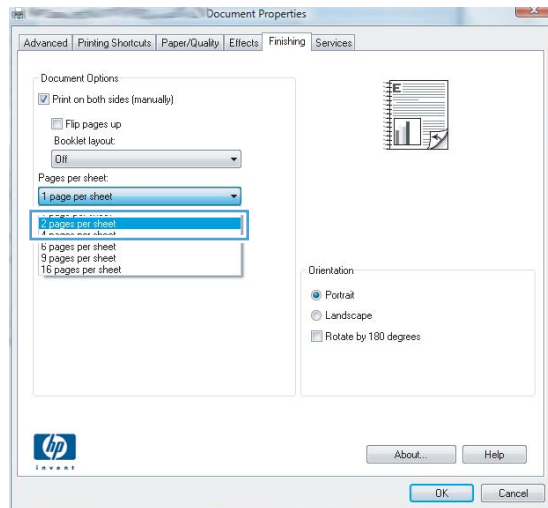
2. Select the product, and then click the **Properties** or **Preferences** button.



3. Click the **Finishing** tab.



4. Select the number of pages per sheet from the **Pages per sheet** drop-down list.



5. Select the correct **Print page borders**, **Page order**, and **Orientation** options.

