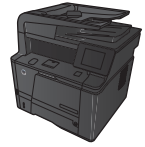





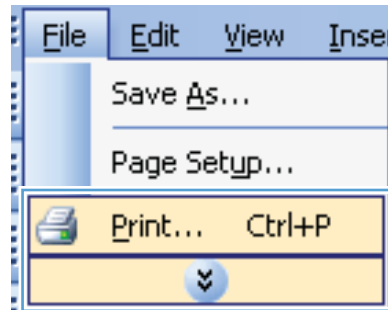
LASERJET PRO 400 MFP M425 SERIES



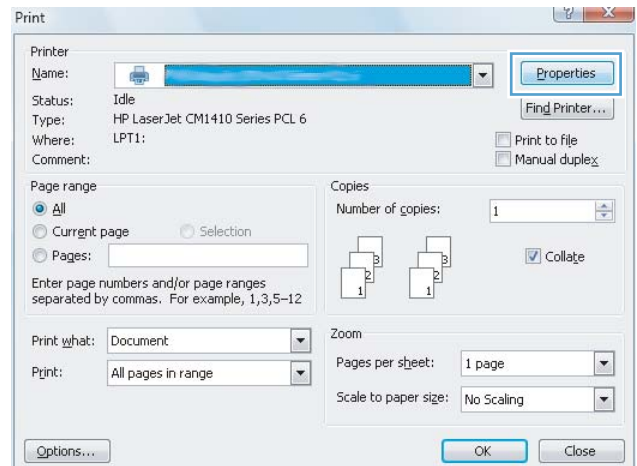
Manually print on both sides with Windows

 **NOTE:** This product includes an automatic two-sided printing feature. However, the product also can print two-sided jobs manually if the paper is not supported by automatic two-sided printing, or if the duplex unit has been disabled.

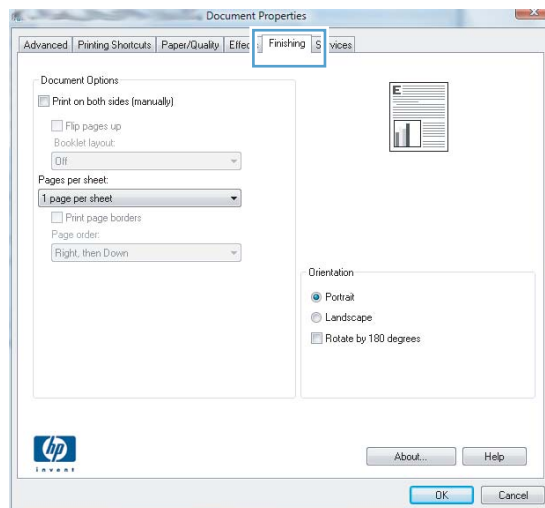
1. On the **File** menu in the software program, click **Print**.



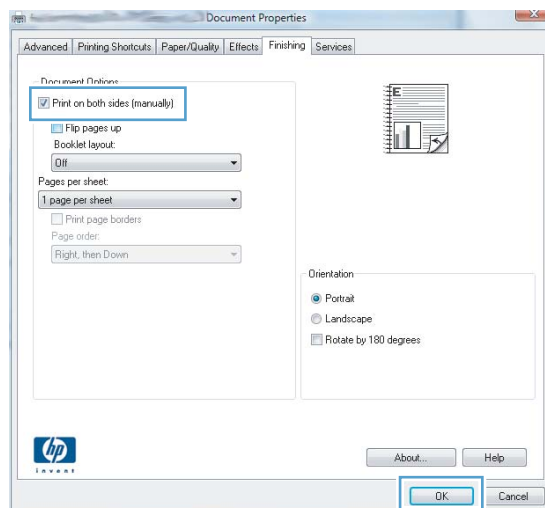
2. Select the product, and then click the **Properties** or **Preferences** button.



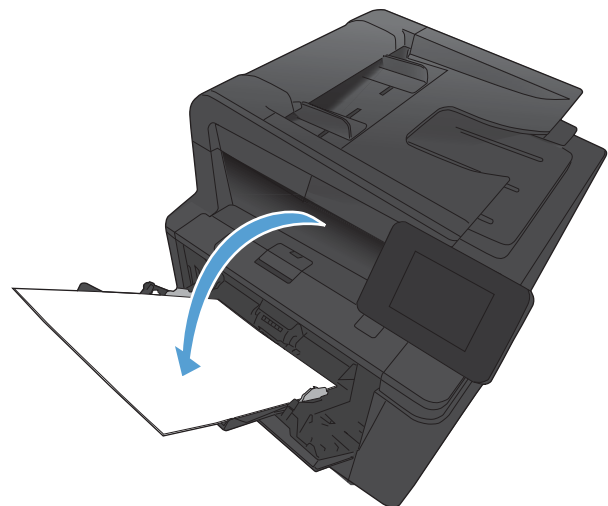
3. Click the **Finishing** tab.



4. Select the **Print on both sides (manually)** check box. Click the **OK** button to print the first side of the job.



5. Retrieve the printed stack from the output bin and, maintaining the same orientation, place it in Tray 1 with the printed side down and the top of the pages toward the product.



6. On the control panel, press the **OK** button to print the second side of the job.