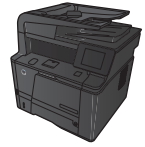


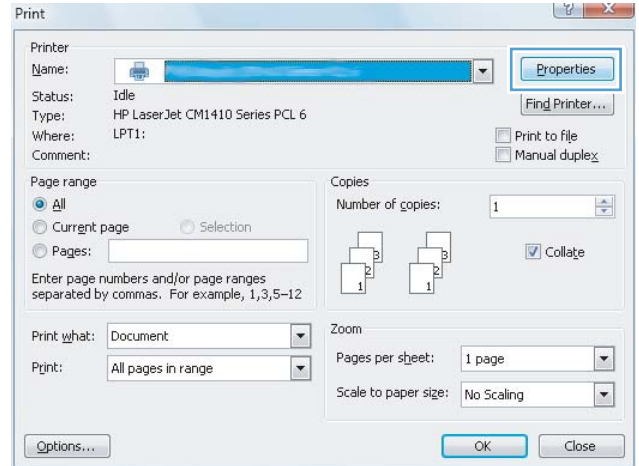


# LASERJET PRO 400 MFP M425 SERIES

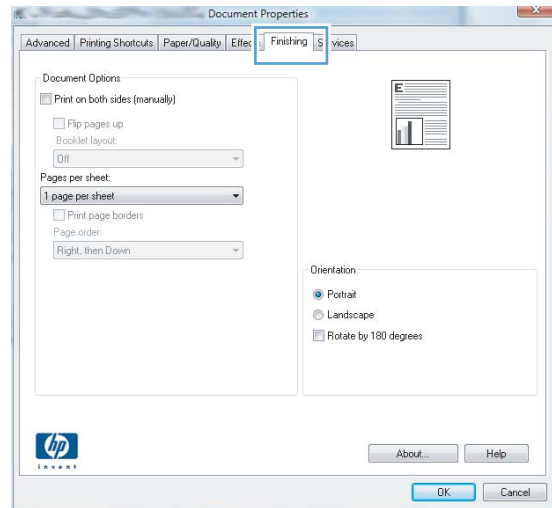


## Create a booklet (Windows)

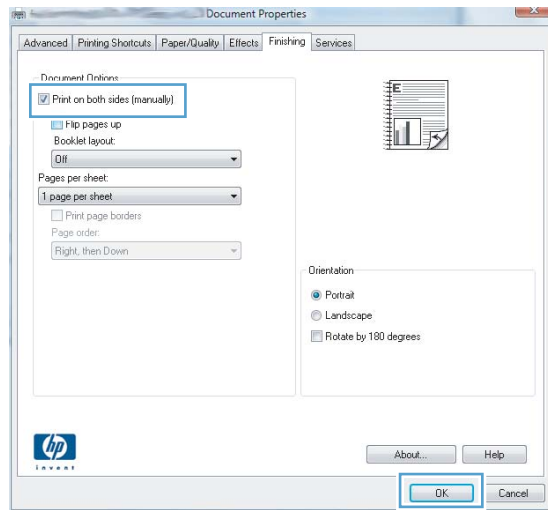
1. From the software program, select the **Print** option.
2. Select the product, and then click the **Properties** or **Preferences** button.



3. Click the **Finishing** tab.



4. Click the **Print on both sides** or **Print on both sides (manually)** check box.



5. In the **Booklet layout** drop-down list, select a binding option. The **Pages per sheet** option automatically changes to **2 pages per sheet**.

