

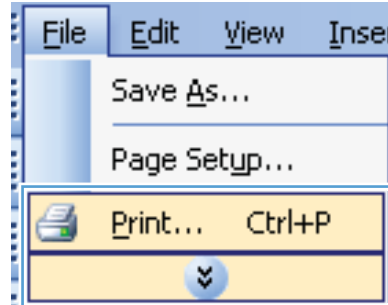


# LASERJET PRO 400 MFP M425 SERIES

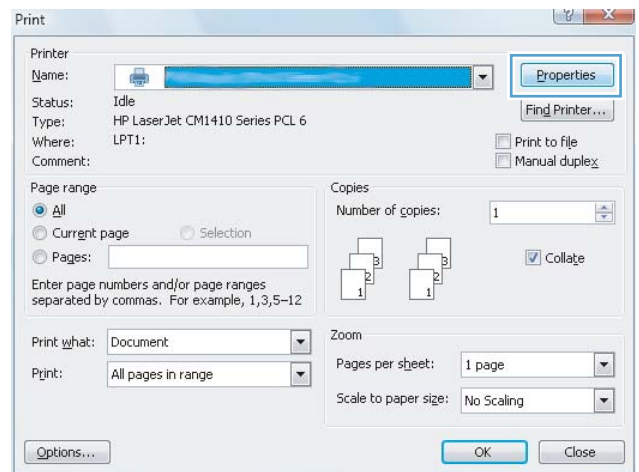


## Automatically print on both sides with Windows

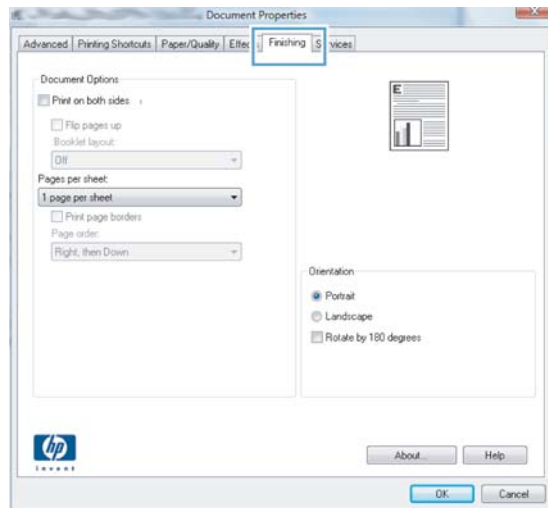
1. On the **File** menu in the software program, click **Print**.



2. Select the product, and then click the **Properties** or **Preferences** button.



3. Click the **Finishing** tab.



4. Select the **Print on both sides** check box. Click the **OK** button to print the job.

**NOTE:** If the product is a duplex model and only manual duplex appears, either the duplex unit is not installed correctly in the **Device Settings** tab of the **Printer Properties** dialog box, or the media type is not supported by the duplex unit.

