

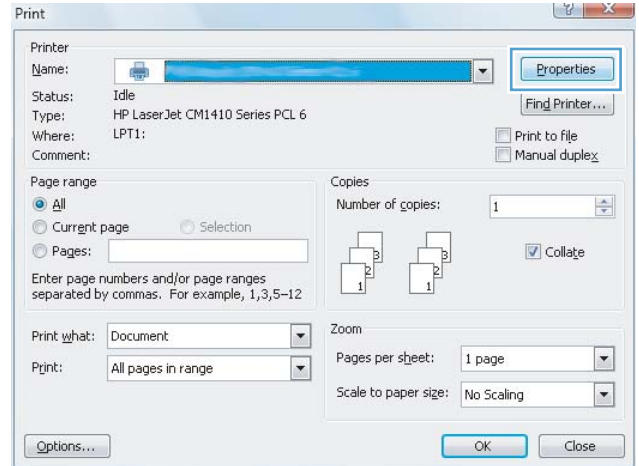


# LASERJET PRO 400 M401 PRINTER SERIES

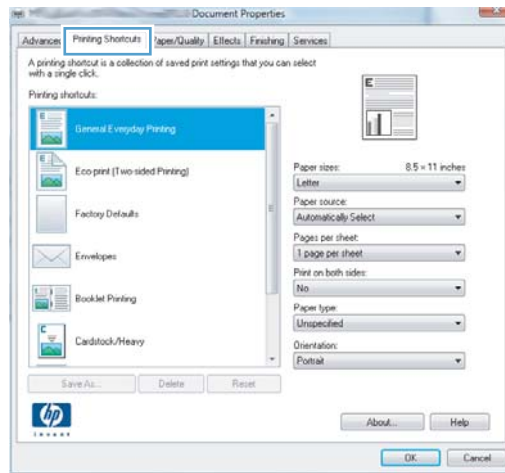


## Use a printing shortcut (Windows)

1. From the software program, select the **Print** option.
2. Select the product, and then click the **Properties** or **Preferences** button.



3. Click the **Printing Shortcuts** tab.



4. Select one of the shortcuts, and then click the **OK** button.

**NOTE:** When you select a shortcut, the corresponding settings change on the other tabs in the printer driver.

