

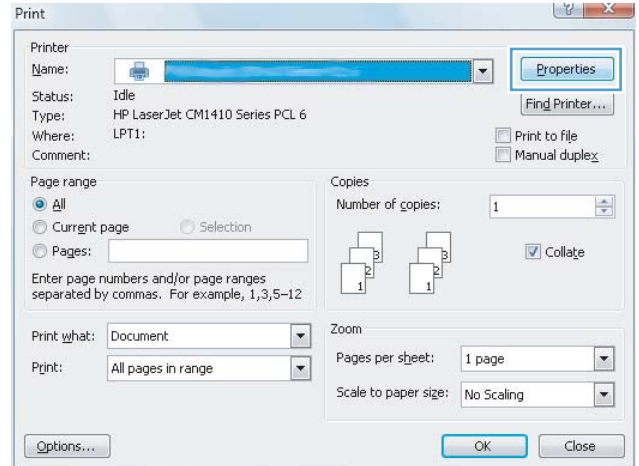


LASERJET PRO 400 M401 PRINTER SERIES

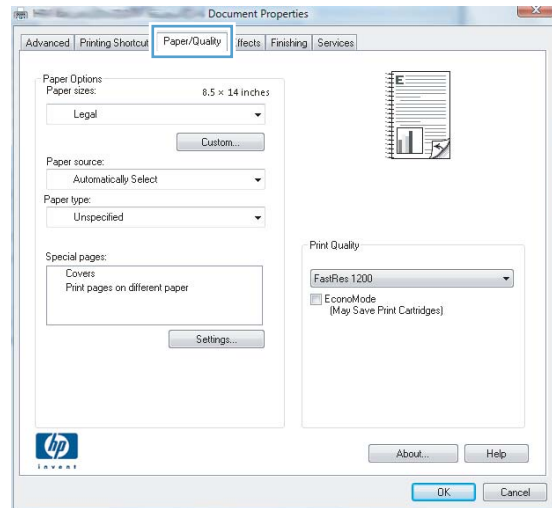


Select the paper type (Windows)

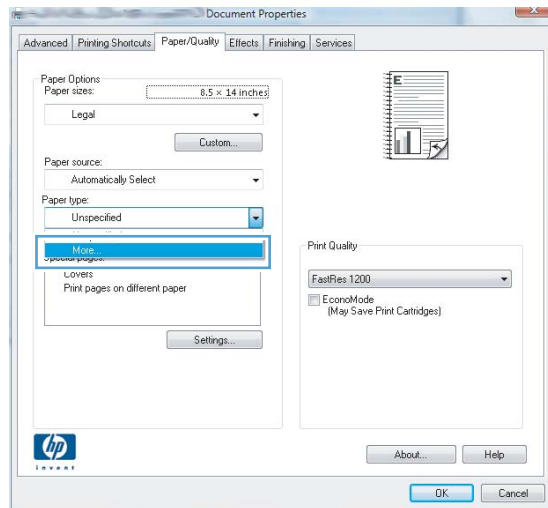
1. From the software program, select the **Print** option.
2. Select the product, and then click the **Properties** or **Preferences** button.



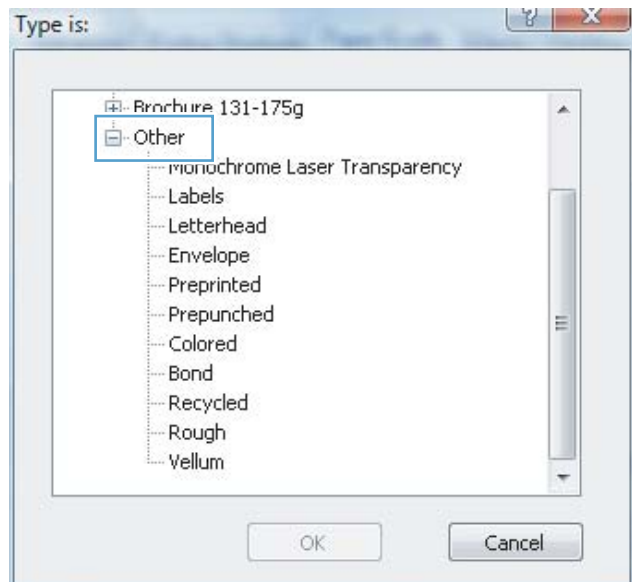
3. Click the **Paper/Quality** tab.



4. From the **Paper type** drop-down list, click the **More...** option.



5. Select the category of paper types that best describes your paper.



6. Select the option for the type of paper you are using, and click the **OK** button.

