



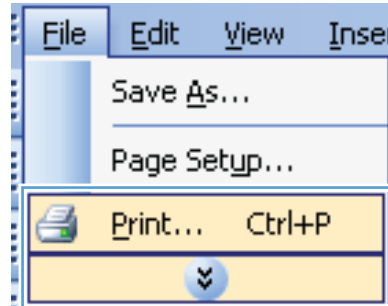
LASERJET PRO 400 M401 PRINTER SERIES



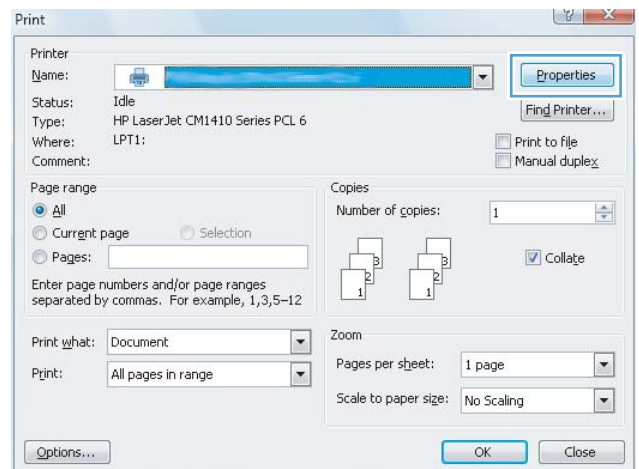
Manually print on both sides with Windows

NOTE: This section primarily applies to the HP LaserJet Pro 400 M401a Printer and HP LaserJet Pro 400 M401n Printer models. However, the HP LaserJet Pro 400 M401d Printer, HP LaserJet Pro 400 M401dn Printer, and HP LaserJet Pro 400 M401dw Printer models also can print two-sided jobs manually if the paper is not supported by automatic two-sided printing, or if the duplexing unit has been disabled.

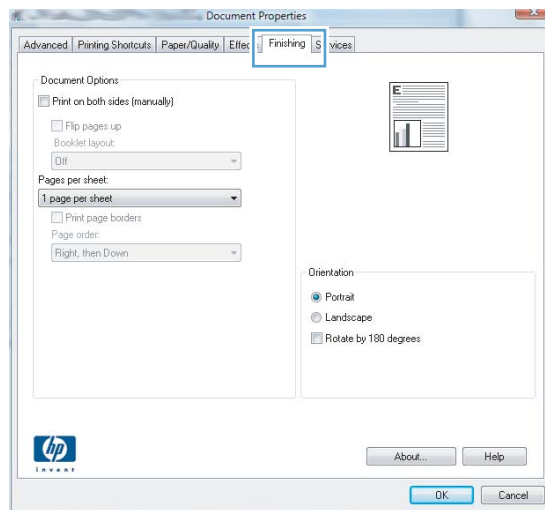
1. On the **File** menu in the software program, click **Print**.



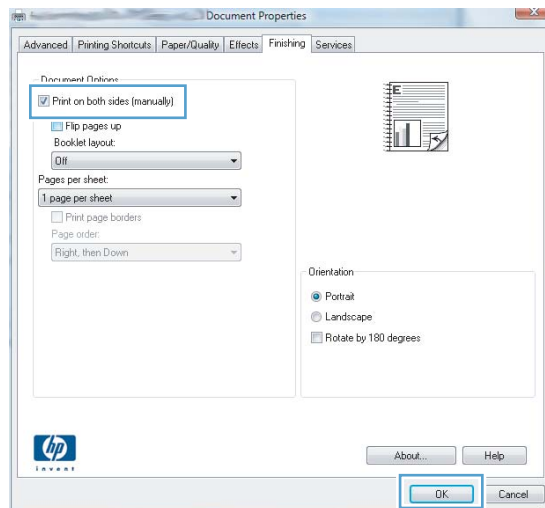
2. Select the product, and then click the **Properties** or **Preferences** button.



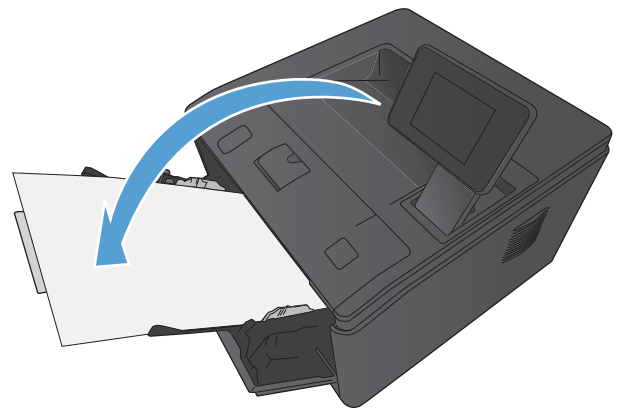
3. Click the **Finishing** tab.



4. Select the **Print on both sides (manually)** check box. Click the **OK** button to print the first side of the job.



5. Retrieve the printed stack from the output bin and, maintaining the same orientation, place it in Tray 1 with the printed side down and the top of the pages toward the product.



6. On the control panel, press the **OK** button to print the second side of the job.