




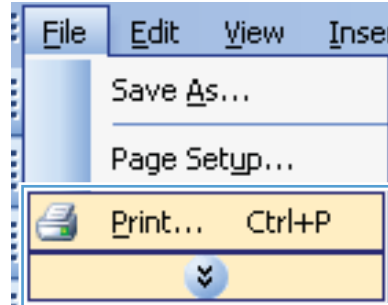
# LASERJET PRO 400 M401 PRINTER SERIES



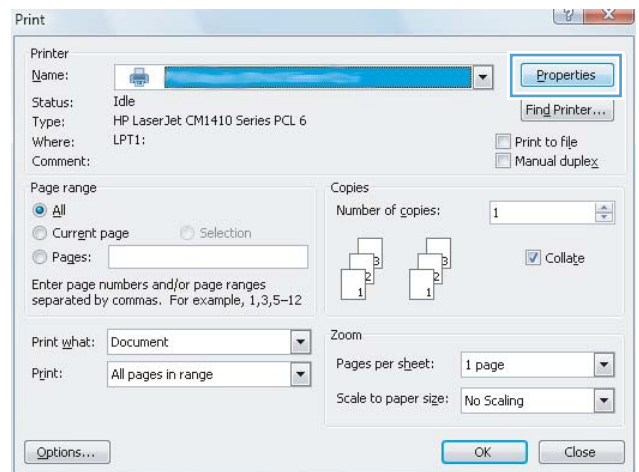
## Automatically print on both sides with Windows

 **NOTE:** This section applies to the HP LaserJet Pro 400 M401d Printer, HP LaserJet Pro 400 M401dn Printer, and HP LaserJet Pro 400 M401dw Printer models only.

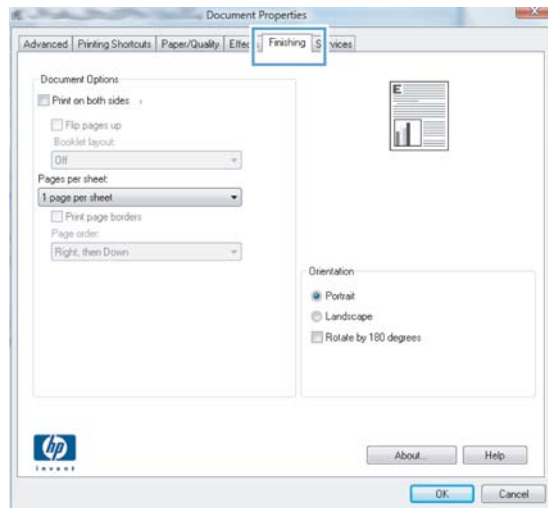
1. On the **File** menu in the software program, click **Print**.



2. Select the product, and then click the **Properties** or **Preferences** button.



3. Click the **Finishing** tab.



4. Select the **Print on both sides** check box. Click the **OK** button to print the job.

