

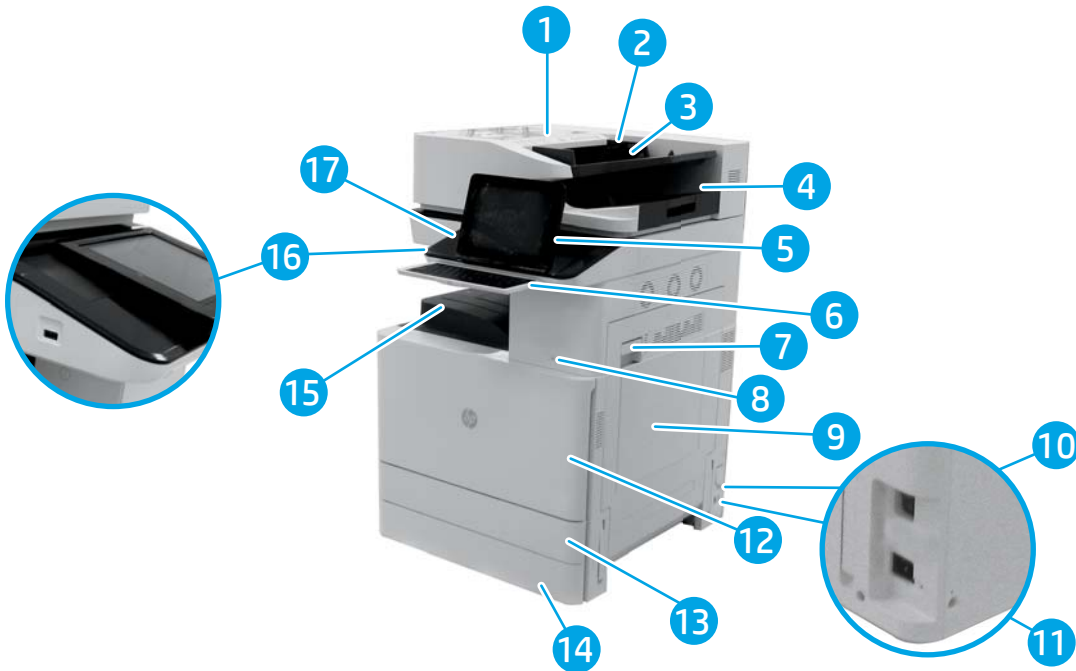


LaserJet Managed MFP E82500, E87600 Series

Printer views

- [Printer front view](#)
- [Printer back view](#)
- [Interface ports](#)
- [Control-panel view](#)
- [Inner finisher view](#)
- [Stapler/stacker finisher view](#)
- [Booklet finisher view](#)

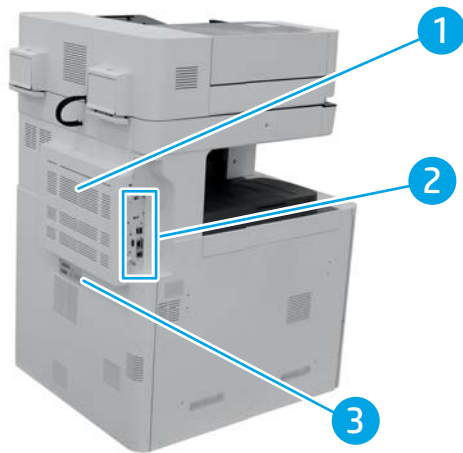
Printer front view



1	Automatic document feeder cover (access for clearing jams)
2	Automatic document feeder width guides
3	Automatic document feeder input tray

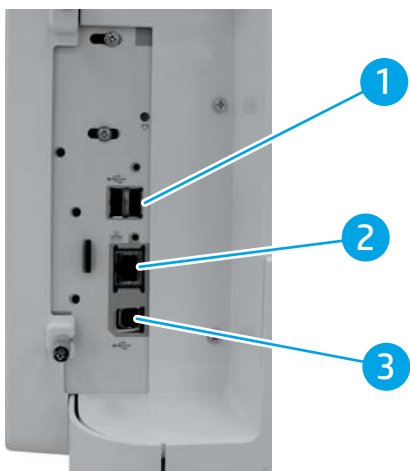
4	Automatic document feeder output tray
5	Control panel with color touchscreen display (tilts up for easier viewing)
6	Physical keyboard (Flow models only). Pull the keyboard straight out to use it. (NOTE: Close the keyboard when it is not in use.)
7	Right door (access for clearing jams)
8	On/off button
9	Tray 1
10	Power switch
11	Power connection
12	Front door (access to the toner cartridges)
13	Tray 2
14	Tray 3
15	Output bin
16	Easy-access USB port. Insert a USB flash drive for printing or scanning without a computer, or to update the printer firmware. (NOTE: An administrator must enable this port before use.)
17	Hardware integration pocket (for connecting accessory and third-party devices)

Printer back view




1	Formatter cover
2	Interface ports
3	Serial number and product number label

Interface ports




-
- | | |
|---|---|
| 1 | USB port for connecting external USB devices (NOTE: For easy-access USB printing, use the USB port near the control panel.) |
| 2 | Local area network (LAN) Ethernet network port |
| 3 | Hi-Speed USB 2.0 printing port |
-

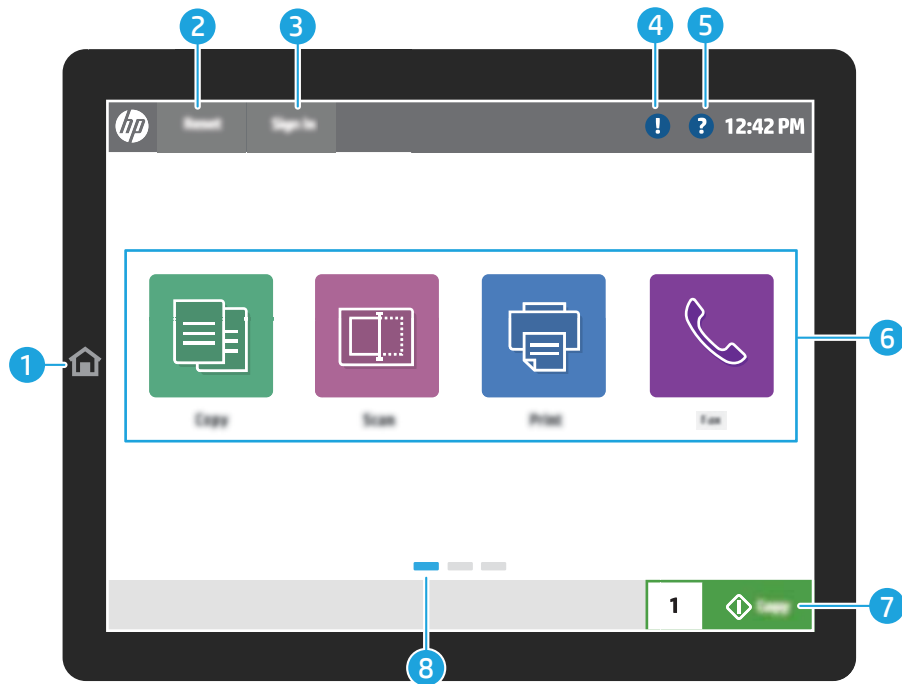
Control-panel view


 **NOTE:** Tilt the control panel for easier viewing.

The Home screen provides access to the printer features and indicates the current status of the printer.

Return to the Home screen at any time by touching the Home  button on the printer control panel.



 **NOTE:** The features that appear on the Home screen can vary, depending on the printer configuration.



- | | | |
|---|---|---|
| 1 | Home  button | Touch the Home button to return to the Home screen. |
| 2 | Reset button | The Reset button returns the printer to default settings and is always present if users are not logged in. The Reset button is not present when the Sign Out button is present. Touch the Reset button to resume and release jobs from the previous pause state and interrupt mode, reset the quick copy count in the copy count field, exit special modes, reset the display language and the keyboard layout. |
| 3 | Sign In or Sign Out button | Touch the Sign In button to access secured features.

Touch the Sign Out button to sign out of the printer. The printer restores all options to the default settings.

NOTE: This button displays only if the administrator has configured the printer to require permission for access to features. |

4	Information  button	<p>Touch the information button to access a screen that provides access to several types of printer information. Touch the buttons at the bottom of the screen for the following information:</p> <ul style="list-style-type: none"> • Display Language: Change the language setting for the current user session. • Sleep Mode: Place the printer into sleep mode. • Wi-Fi Direct: View information for how to connect directly to the printer using a phone, tablet, or other device with Wi-Fi. • Wireless: View or change wireless connection settings (only when an optional wireless accessory is installed). • Ethernet: View or change Ethernet connection settings. • HP Web Services: View information to connect and print to the printer using HP Web Services (ePrint).
5	Help  button	<p>Touch the Help button to open the embedded help system.</p> <p>The status line provides information about the overall printer status.</p>
6	Applications area	<p>Touch any of the icons to open the application. Swipe the screen sideways to access more applications.</p> <p>NOTE: The available applications vary by printer. The administrator can configure which applications appear and the order in which they appear.</p>
7	Start Copy button	Touch the Start Copy button to start a copy job.
8	Home-screen page indicator	Indicates the number of pages on the Home screen or in an application. The current page is highlighted. Swipe the screen sideways to scroll between pages.

Inner finisher view



Stapler/stacker finisher view



Booklet finisher view

