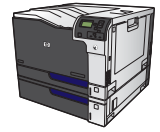


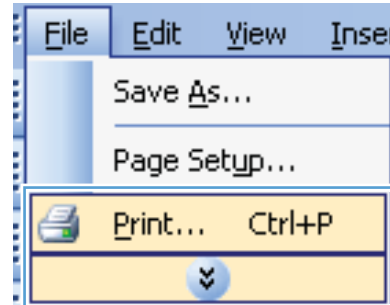


# HP LaserJet Enterprise CP5520 Series Printer

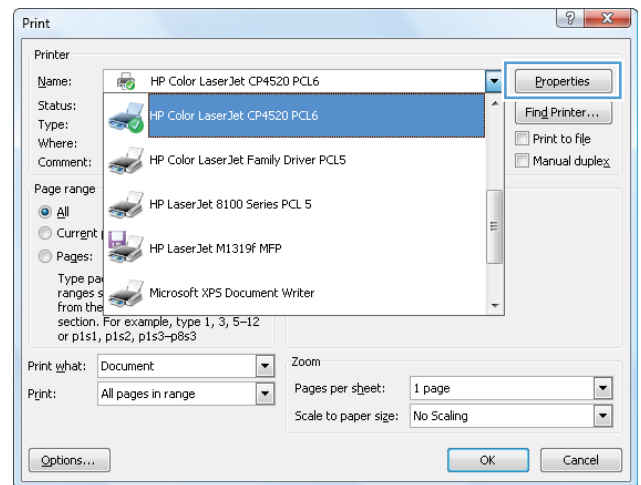


## Set color options with Windows

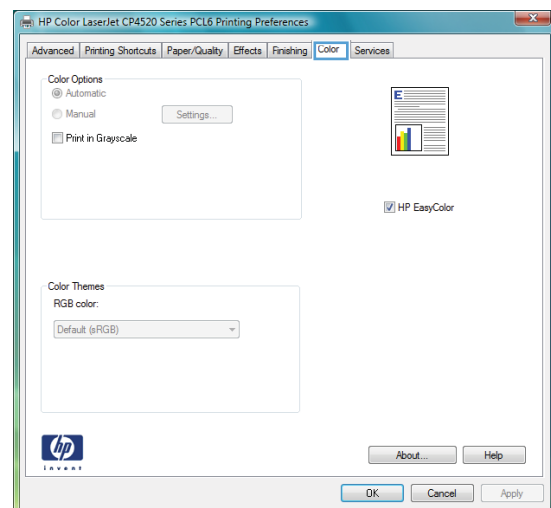
1. On the **File** menu in the software program, click **Print**.



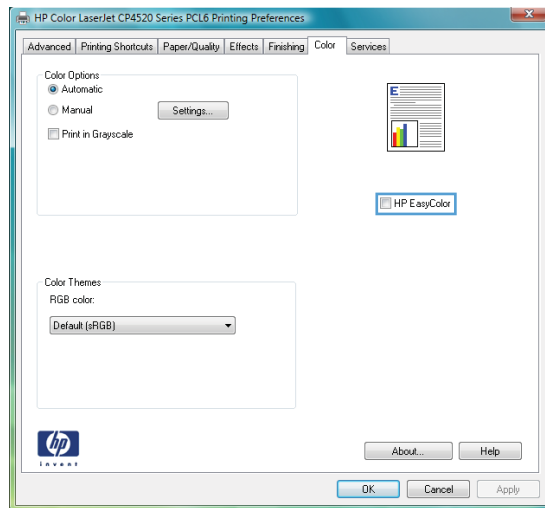
2. Select the product, and then click the **Properties** or **Preferences** button.



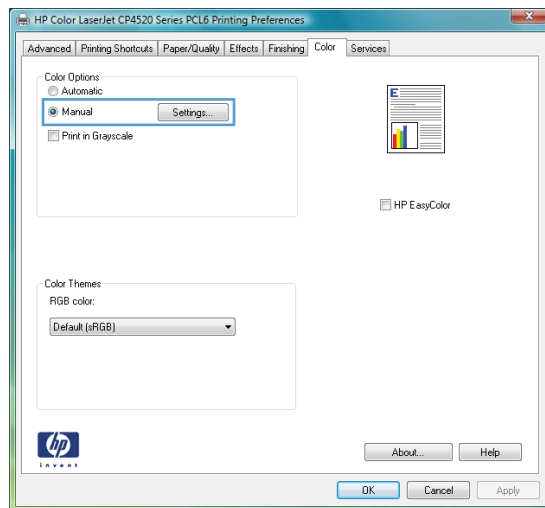
3. Click the **Color** tab.



4. Click the **HP EasyColor** check box to clear it.



5. In the **Color Options** area, click the **Manual** option, and then click the **Settings** button.



6. Adjust the general settings for Edge Control, and settings for text, graphics, and photographs.

