

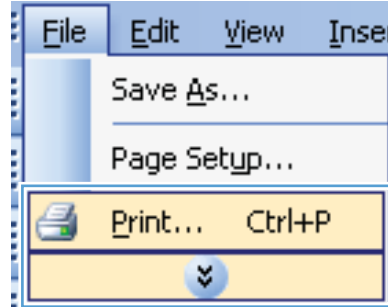


HP Color LaserJet Enterprise CP4020-CP4520 Series Printer

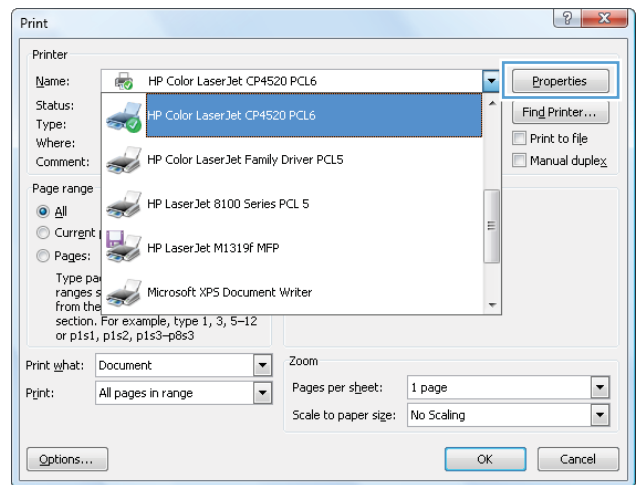


Print on special paper, labels, or transparencies

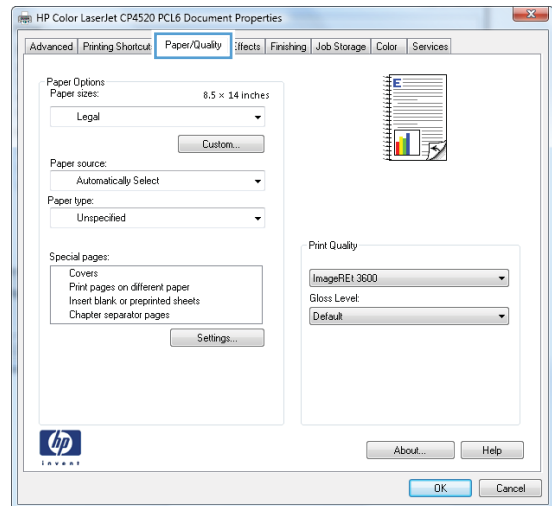
1. On the **File** menu in the software program, click **Print**.



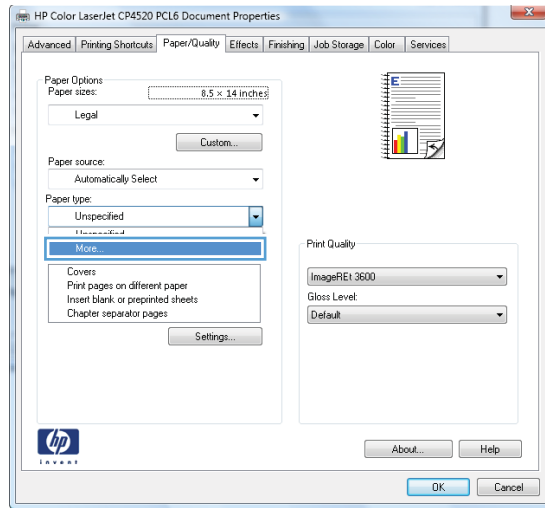
2. Select the product, and then click the **Properties** or **Preferences** button.



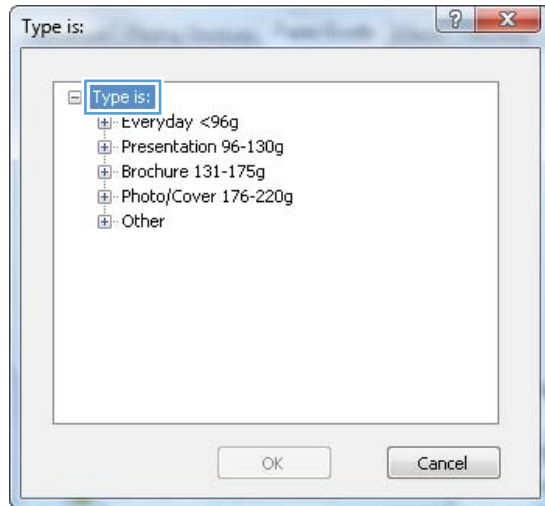
3. Click the **Paper/Quality** tab.



4. From the **Paper type** drop-down list, click the **More...** option.

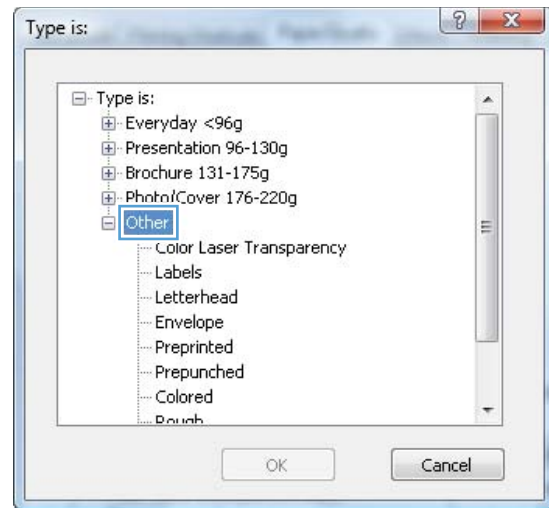


5. Expand the list of **Type is:** options.



- Expand the category of paper types that best describes your paper.

NOTE: Labels and transparencies are in the list of **Other** options.



- Select the option for the type of paper you are using, and click the **OK** button.

