

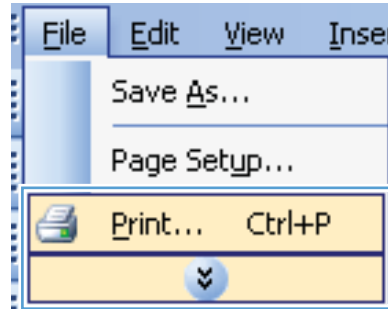


HP Color LaserJet Enterprise CP4020-CP4520 Series Printer

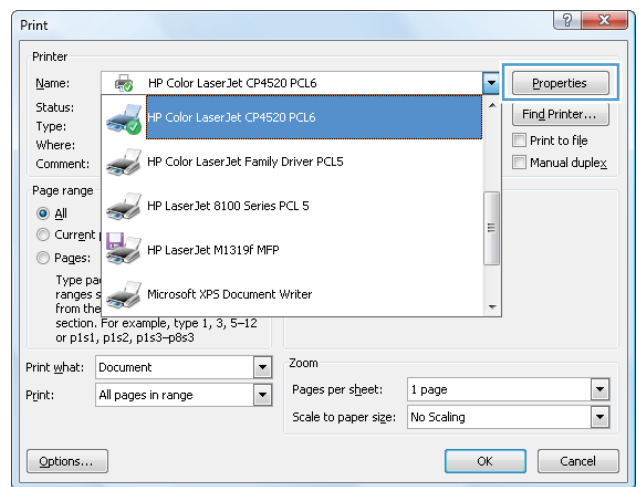


Print on preprinted letterhead or forms with Windows

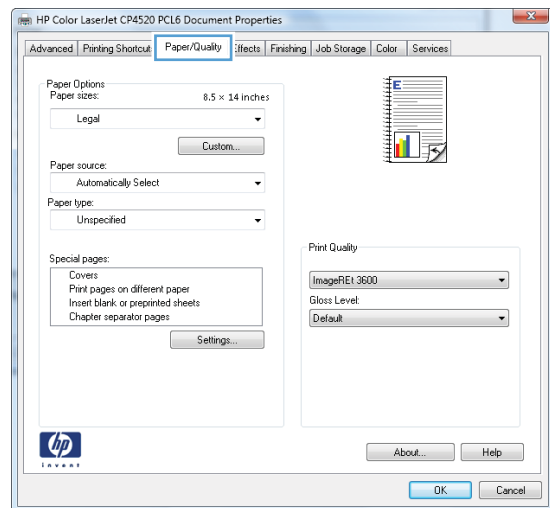
1. On the **File** menu in the software program, click **Print**.



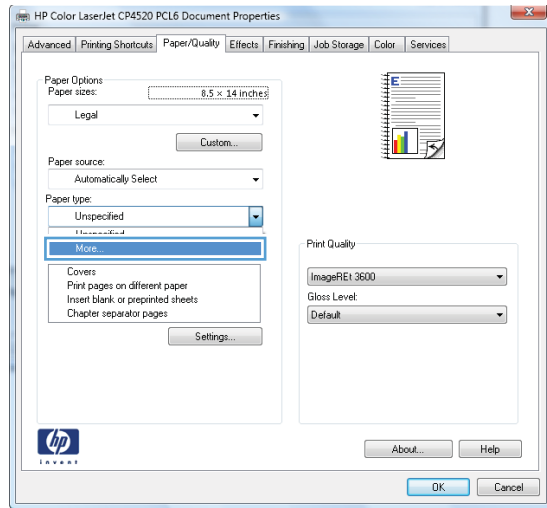
2. Select the product, and then click the **Properties** or **Preferences** button.



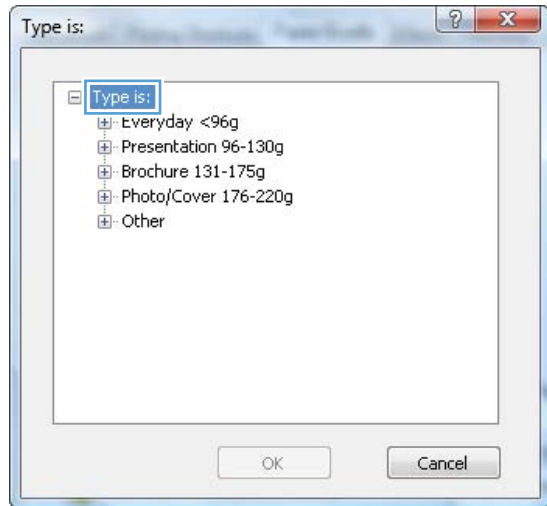
3. Click the **Paper/Quality** tab.



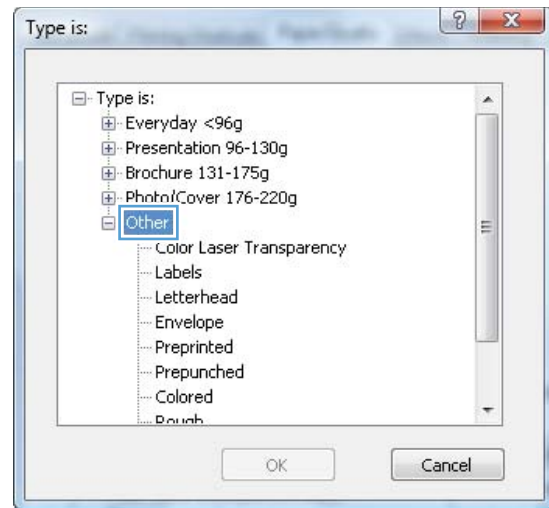
4. From the **Paper type** drop-down list, click the **More...** option.



5. Expand the list of **Type is:** options.



6. Expand the list of **Other** options.



7. Select the option for the type of paper you are using, and click the **OK** button.

