



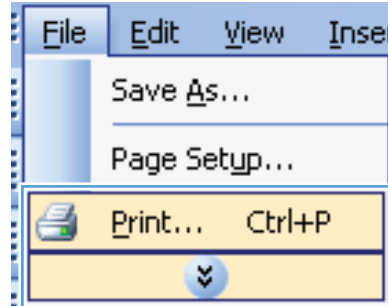
HP Color LaserJet Enterprise CP4020-CP4520 Series Printer



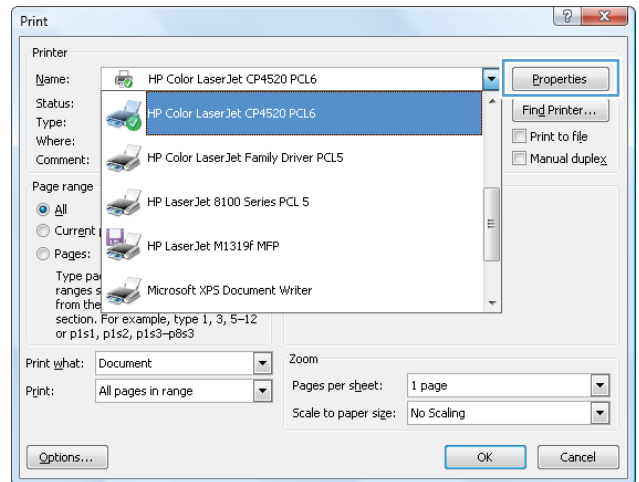
Automatically print on both sides with Windows

NOTE: This information applies only to products that have an automatic duplexer.

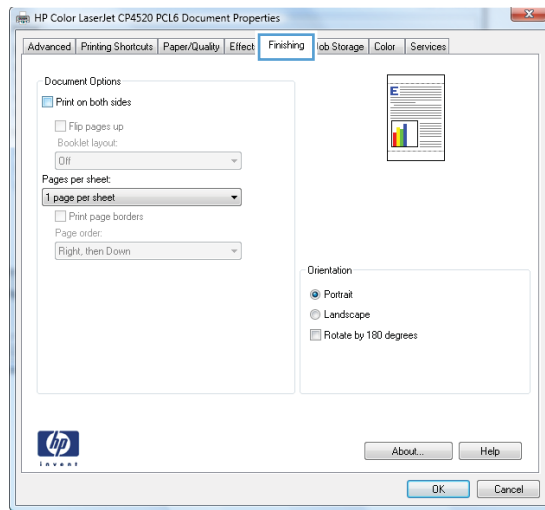
1. On the **File** menu in the software program, click **Print**.



2. Select the product, and then click the **Properties** or **Preferences** button.



3. Click the **Finishing** tab.



4. Select the **Print on both sides** check box. Click the **OK** button to print the job.

