

HP Color LaserJet Enterprise X57945, X654, X677 - Replace the toner cartridges

Replace the toner cartridges if you receive a message on the printer control panel.

Toner cartridge information

This printer indicates when the toner cartridge level is low and very low. The actual toner cartridge life remaining can vary.

To purchase cartridges, contact the managed service representative. Make sure to have the product model number, which appears on the product label on the back of the printer.

Do not remove the toner cartridge from its package until it is time to replace it.


CAUTION: If toner gets on clothing, wipe it off by using a dry cloth and wash the clothes in cold water. Hot water sets toner into fabric.

NOTE: Information about recycling used toner cartridges is in the toner-cartridge box.

Remove and replace the toner cartridge

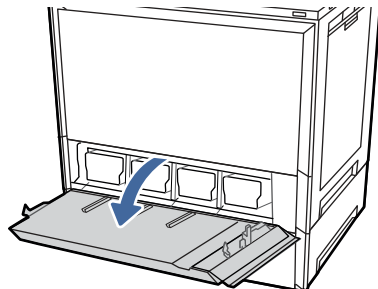
Follow these steps to replace a toner cartridge.

 [View a video of how to replace a toner cartridge](#)

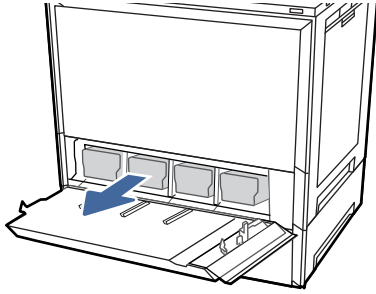
NOTE: When a toner cartridge is empty, a message appears on the control panel. Follow the instructions on the control panel to release the cartridge so that you can replace it. Cartridges cannot be removed before being released by selecting the **Eject** button () from the control panel **Supplies** menu.

CAUTION: Do not try to pull the toner cartridge out by force before it has been released.

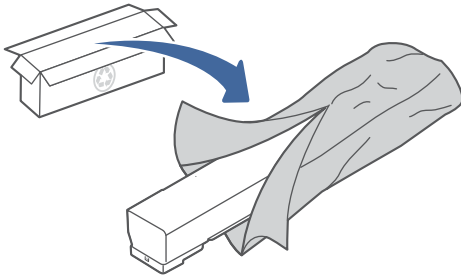
1. Release the toner cartridge by following the instructions on the control panel.
2. Open the toner cartridge door on the front of the printer.



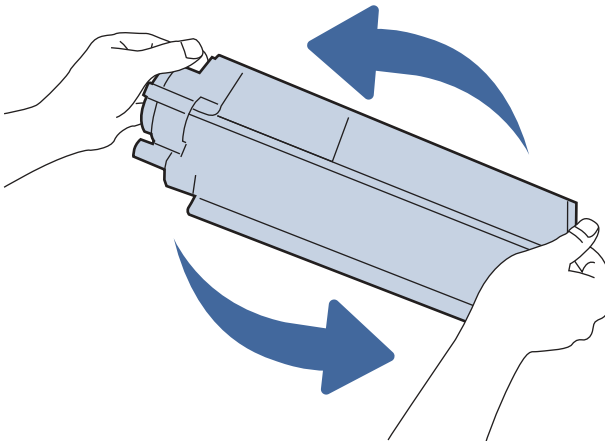
3. Grasp the end of the toner cartridge and pull it straight out of the printer.



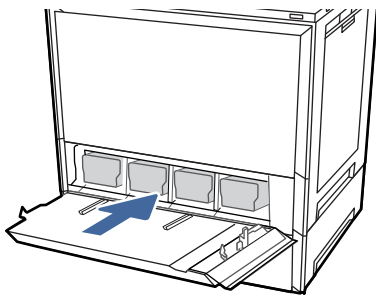
4. Remove the new toner cartridge from its package. Save all packaging for recycling the used toner cartridge.



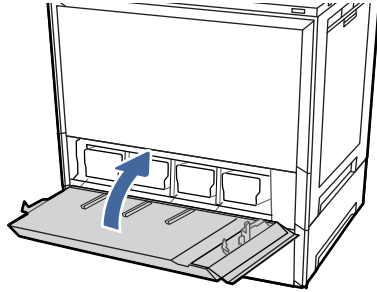
5. Hold both ends of the toner cartridge and rock it to evenly distribute the toner that is inside.



6. Align the toner cartridge with its slot and insert it into the printer.



7. Close the toner cartridge door.



8. Pack the used toner cartridge into the box that the new toner cartridge came in. See the enclosed recycling guide for information about recycling.

In the U.S. and Canada, a pre-paid shipping label is included in the box. In other countries/regions, go to www.hp.com/recycle to print a pre-paid shipping label.

Adhere the pre-paid shipping label to the box, and return the used cartridge to HP for recycling.

